



**world summit  
on the information society**  
Geneva 2003 - Tunis 2005

Helping the world communicate



# Ethical dimensions of digital identity management

**Tim Kelly, Head, Strategy and Policy Unit  
International Telecommunication Union (ITU)**

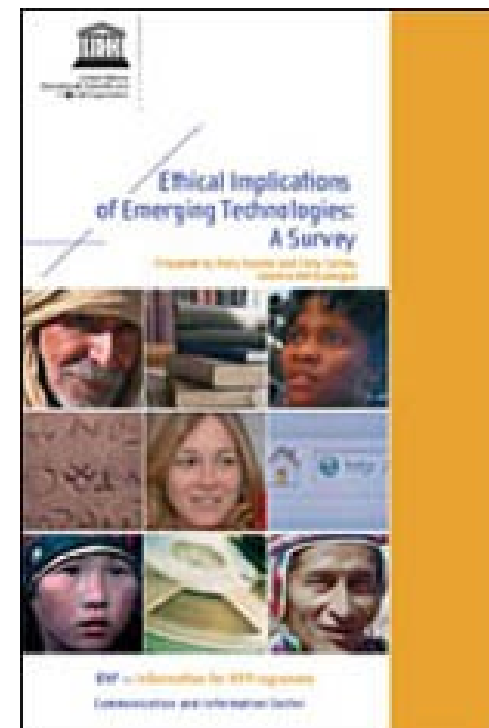
**C10 WSIS action line facilitation meeting,  
Geneva, 25 May 2007**





## Ethical implications of emerging technologies

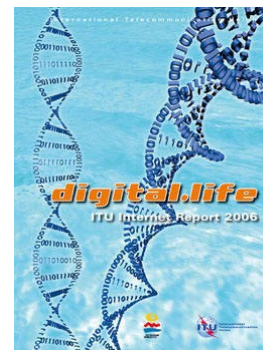
- Semantic Web and metadata
- Digital identity management and Biometrics
- Radio Frequency Identification (RFID) and Sensors
- Mesh networking
- Grid computing
- New computing techniques
- Geospatial web and location-based services





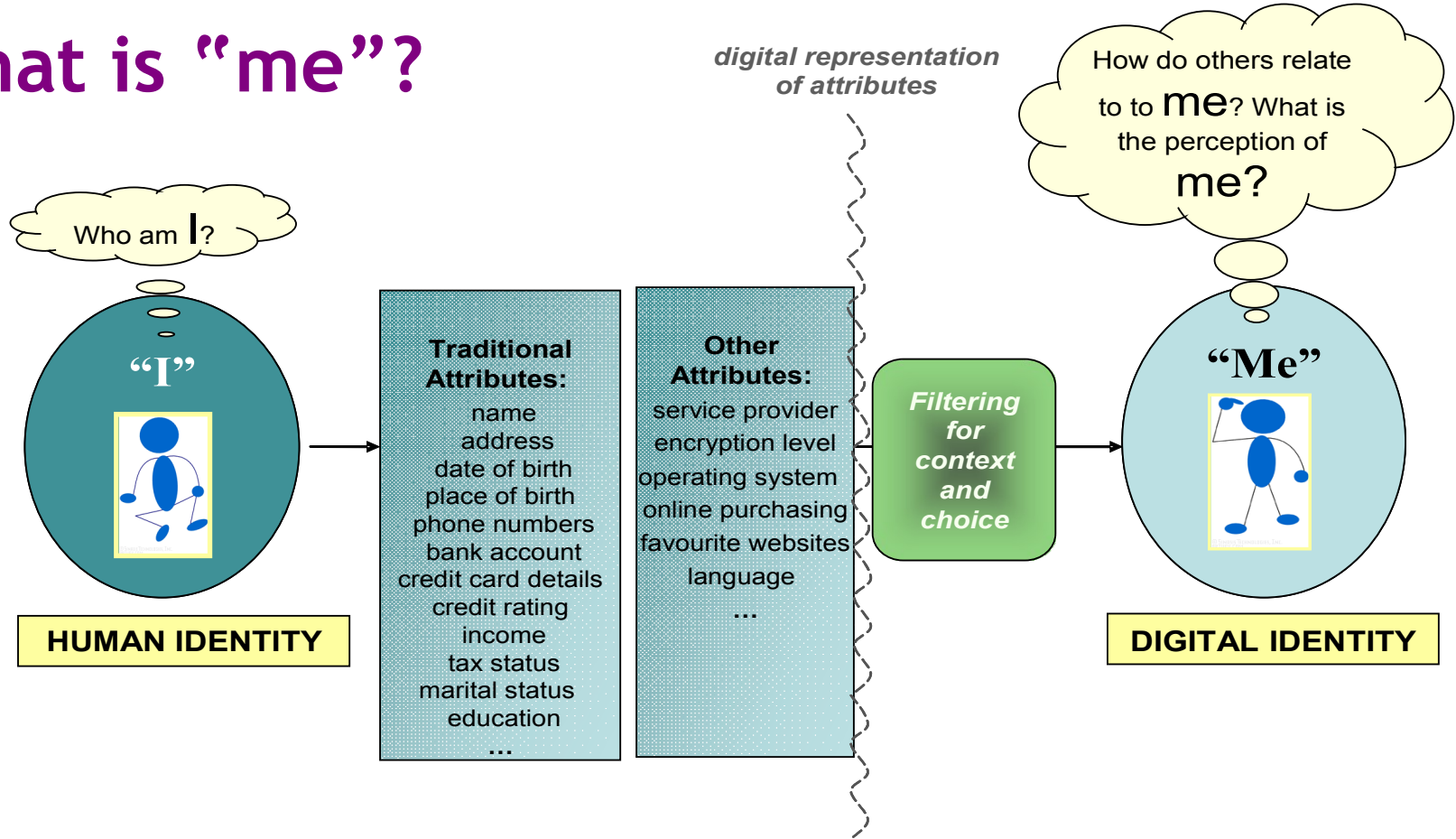
## Recent ITU work relevant to digital identity

- Dec 2006 “Digital.Life” Internet report
  - Chapter 4 on digital identity
  - [www.itu.int/digitallife](http://www.itu.int/digitallife)
- Nov 2005 “Internet of Things” report
  - Chapter 4 on policy and regulatory challenges
  - [www.itu.int/internetofthings](http://www.itu.int/internetofthings)
- December 2006: ITU-T Focus Group on Identity Management (FG IdM)
  - Created by ITU-T Study Group 17
  - Meetings in Geneva, Feb & April; US, May 17-18; Japan, 17-20 July
  - <http://www.itu.int/ITU-T/studygroups/com17/fgidm/index.html>





# Who am I? What is "me"?





## Some important considerations ...

- user-centricity
- transparency
- authentication
- consent
- context
- notification
- accountability
- data minimization
- anonymity and identifiability



**world summit  
on the information society**  
Geneva 2003 - Tunis 2005

Helping the world communicate



website: [www.itu.int/spu](http://www.itu.int/spu)

email: [tim.kelly \(at\) itu.int](mailto:tim.kelly@itu.int)  
[lara.srivastava \(at\) itu.int](mailto:lara.srivastava@itu.int)

**Thank you**

