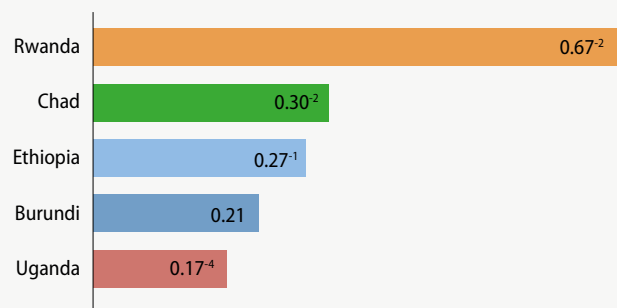




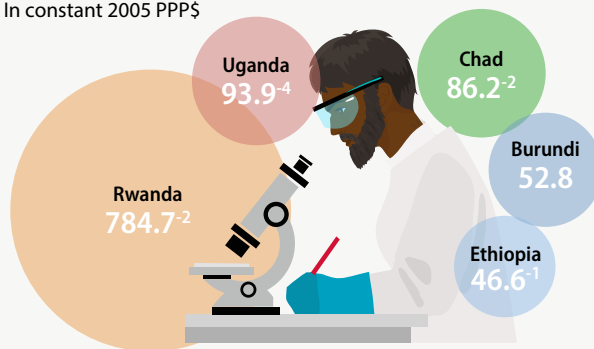
Figure 19.3: Trends in GERD and researchers in Central and East Africa



GERD as a share of GDP in Central and East Africa, 2018 (%)

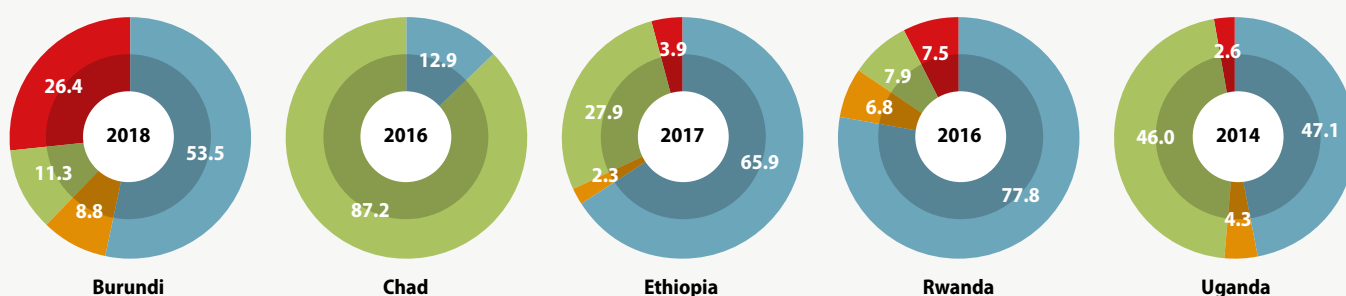


GERD per researcher (FTE) in Central and East Africa, 2018  
In constant 2005 PPP\$

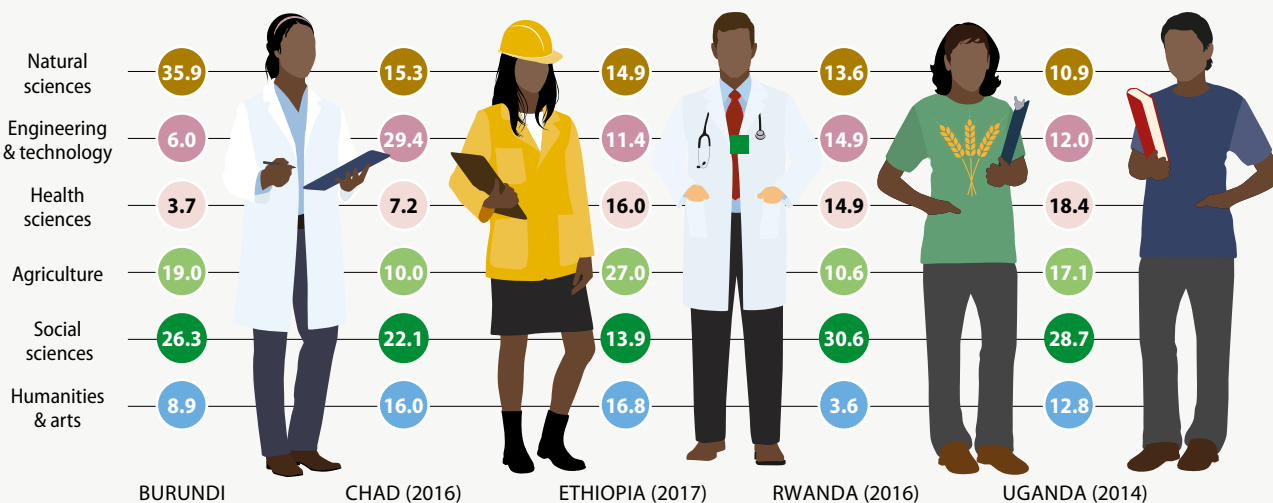


GERD by sector of performance in Central and East Africa, 2018 or closest year (%)

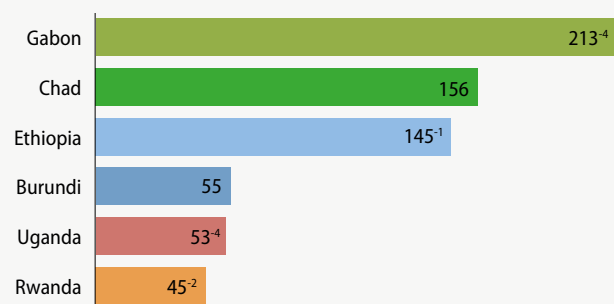
Government Business Higher education Private non-profit



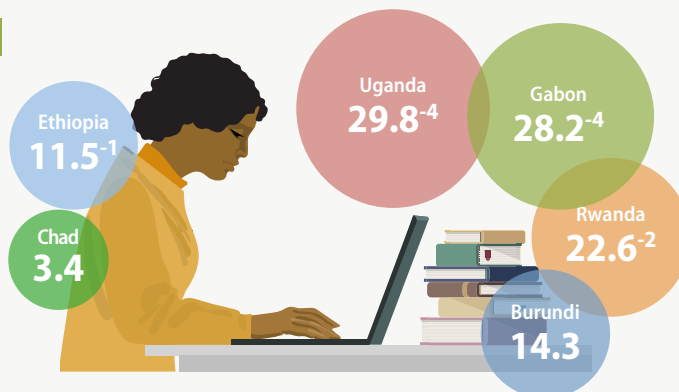
Researchers (HC) by field of science in Central and East Africa, 2018 or closest year (%)



Researchers (HC) per million inhabitants in Central and East Africa, 2018



Share of female researchers (HC) in Central and East Africa, 2018



-n: data refer to n years before the reference year

Note: Recent data are unavailable for most countries in Central and East Africa.

Source: UNESCO Institute for Statistics