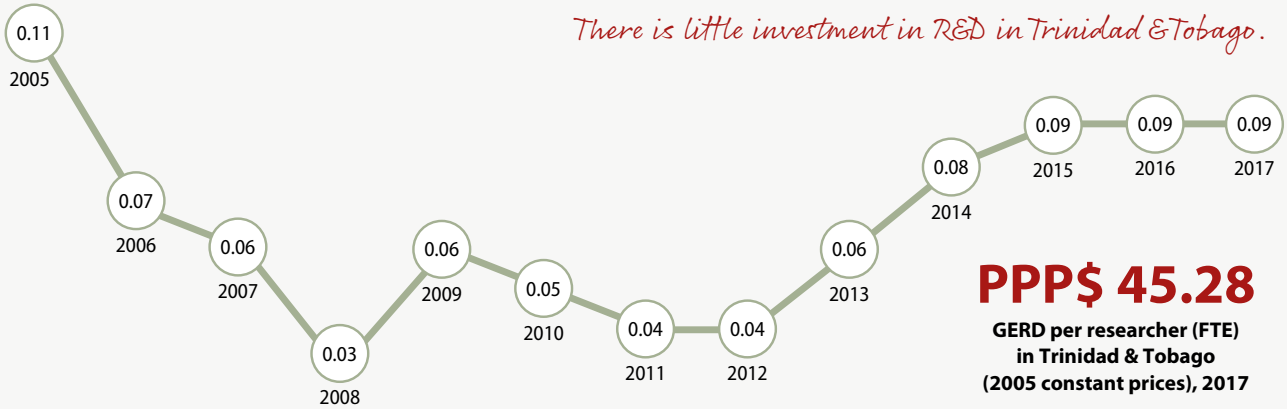




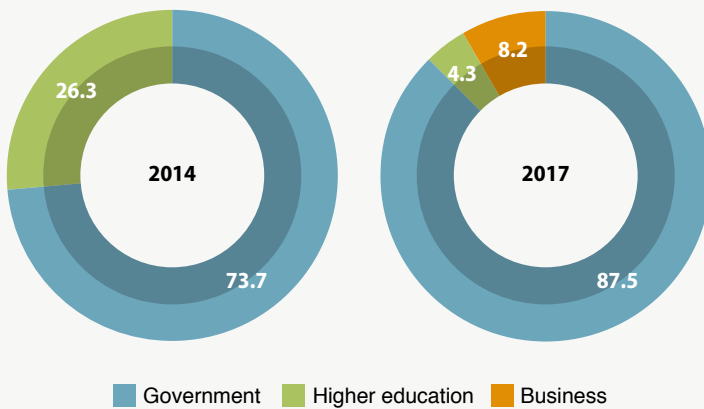
Figure 6.3: Trends in research expenditure and personnel in Trinidad and Tobago



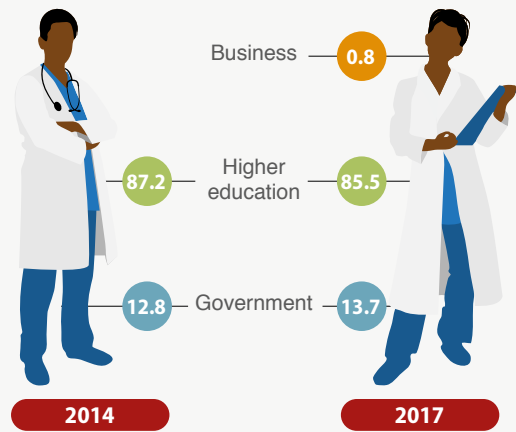
GERD as a share of GDP in Trinidad & Tobago, 2005–2017 (%)



GERD by sector of performance, 2014 and 2017 (%)



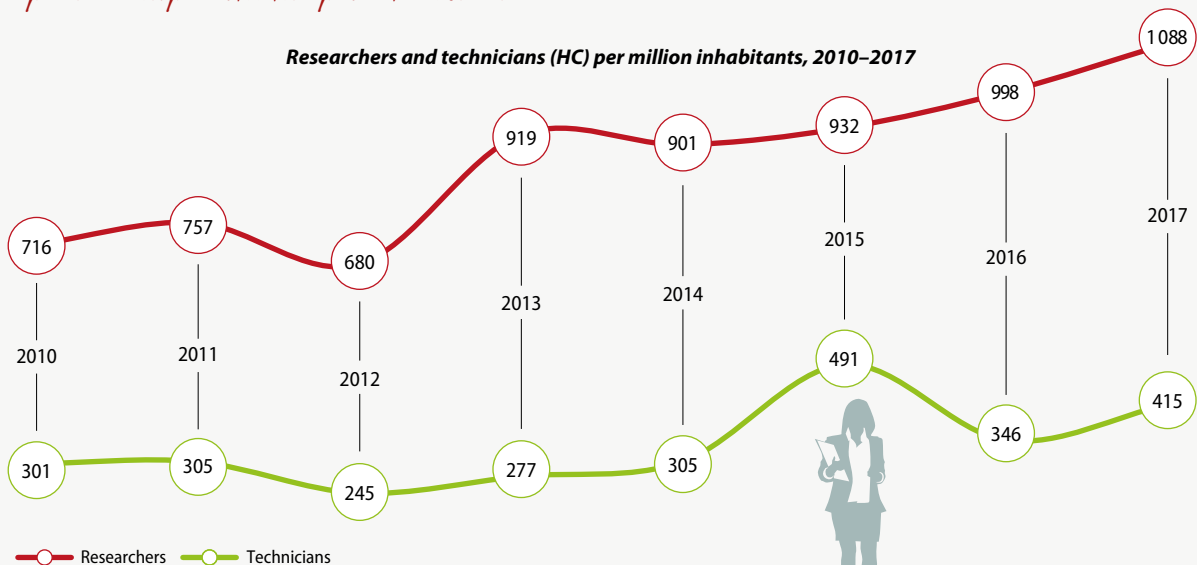
Researchers by sector of employment (HC), 2014 and 2017 (%)



The establishment of UWD Ventures in 2019 by the St Augustine Campus should nurture partnerships with the private sector.

Researchers are almost absent from the private sector.

Researchers and technicians (HC) per million inhabitants, 2010–2017



50.9%

Share of women in science and engineering in 2017

Source: UNESCO Institute for Statistics